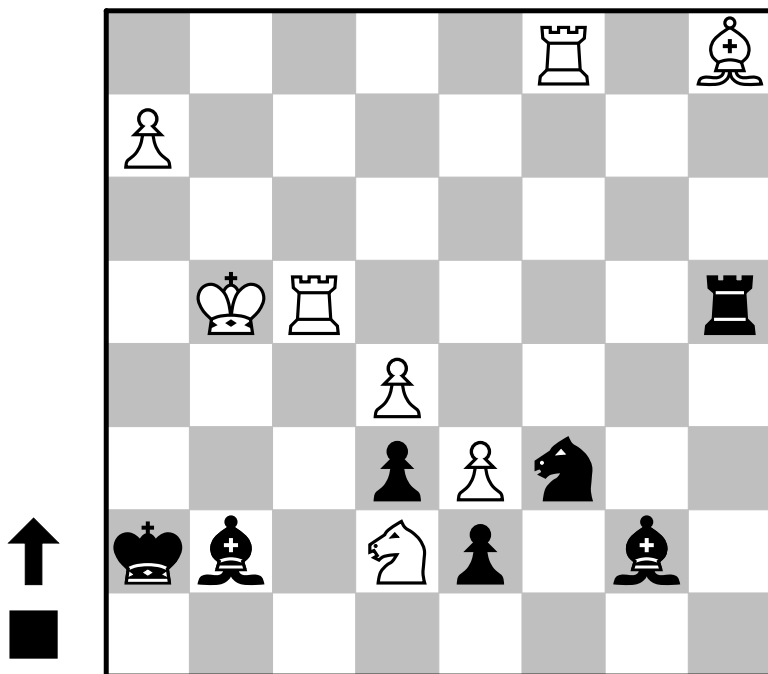
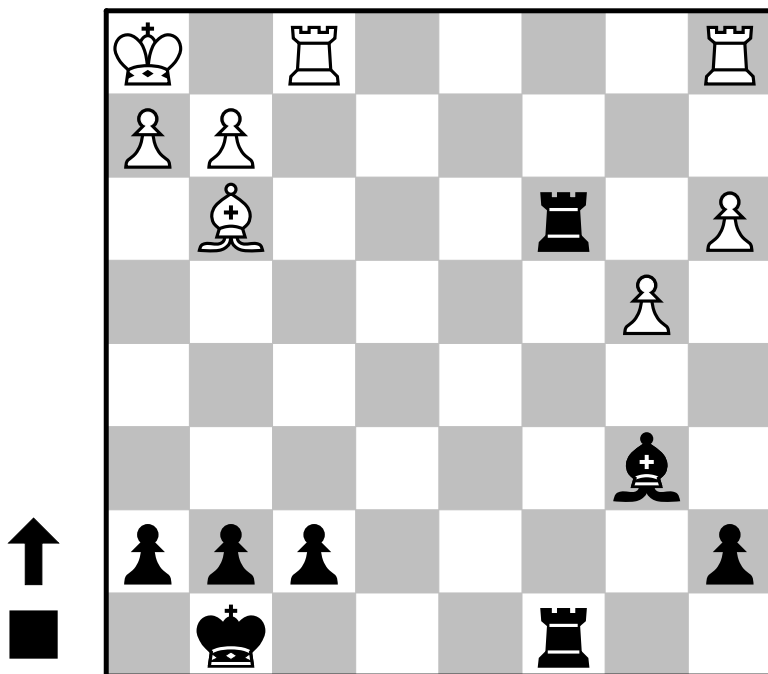


000001



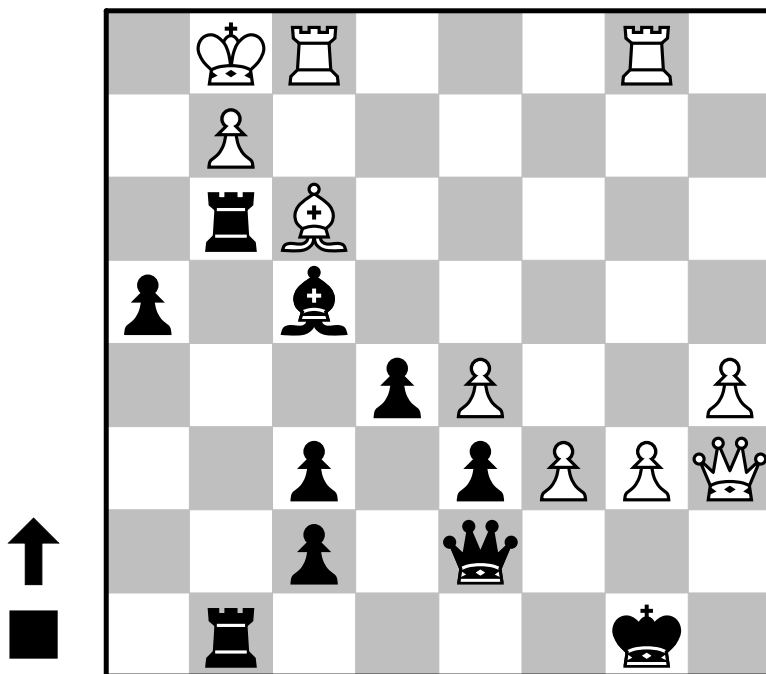
000002



000001

1... Rxf4+ 2. Kxf4 Bh6+ 3. Kg4 Bxc1
advantage attraction long middlegame skewer

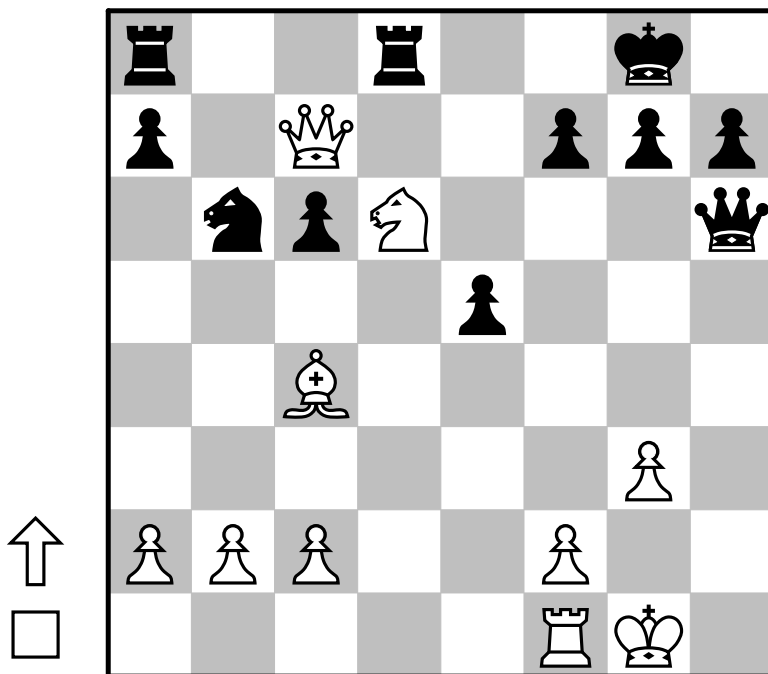
000003



000002

1... Rxc3 2. hxg3 Rc6 3. Rf4 g5 4. Rh4 gxh4
advantage endgame quietMove sacrifice veryLong

000004

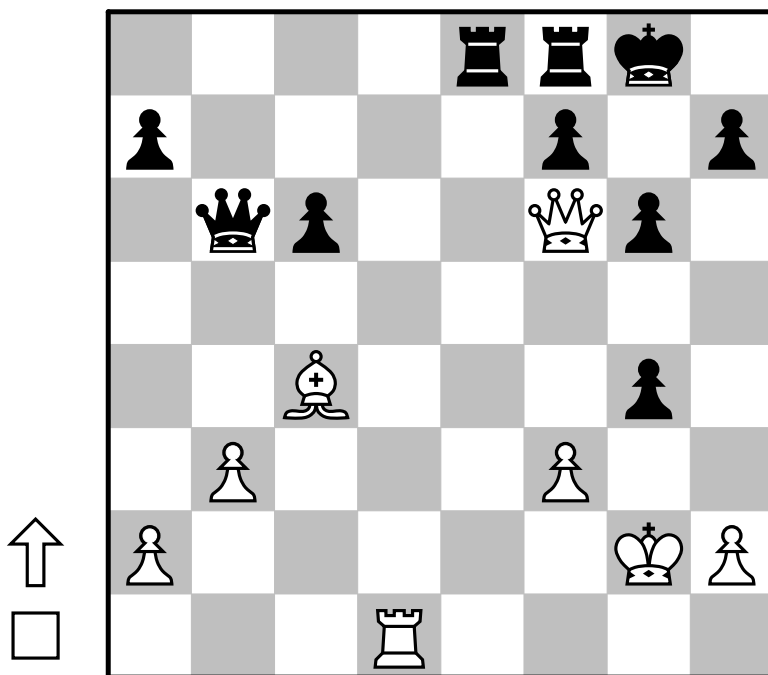


000003

1... Rxf2+ 2. Bxf2 Rxf2+ 3. Kxf2 Qg4+ 4. Kf3 Qg3+ 5. Ke2 Qe3+
6. Kd1 Qd2#

attraction kingsideAttack mate mateIn5 middlegame sacrifice veryLong

000005

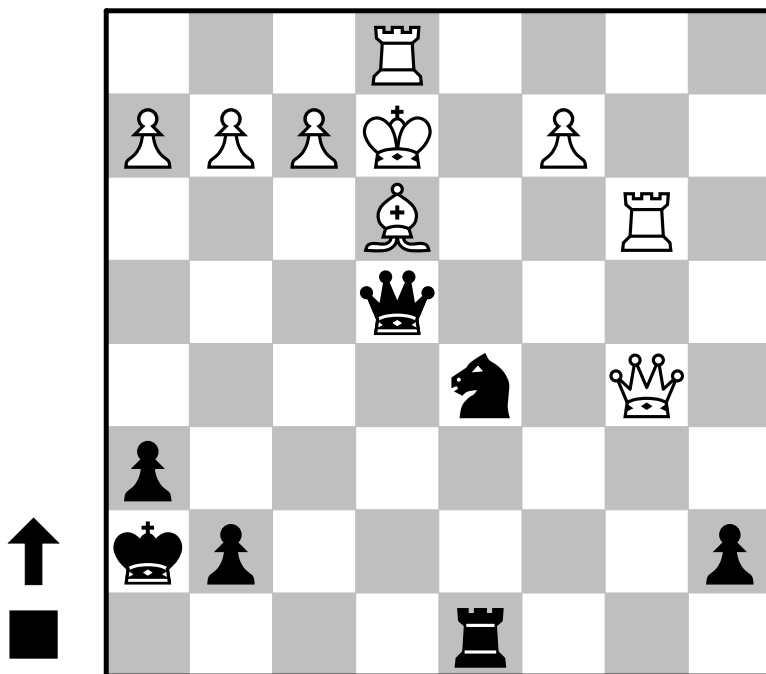


000004

1. Qxf7+ Kh8 2. Qg8+ Rxc8 3. Nf7#

kingsideAttack long mate mateIn3 middlegame sacrifice smotheredMate

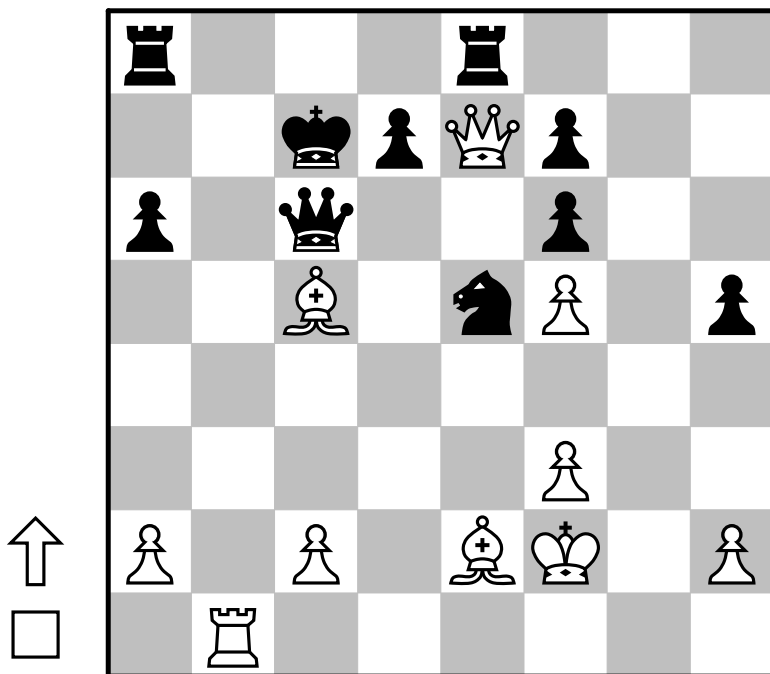
000006



000005

1. Rd7 Re2+ 2. Bxe2
crushing endgame short

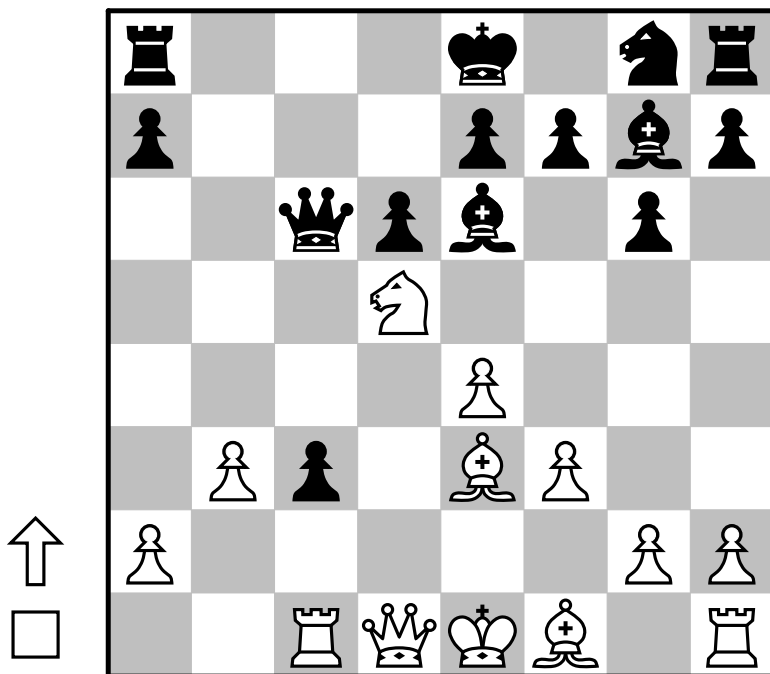
000007



000006

1... Nf4+ 2. Kf1 Qxg2#
mate mateIn2 middlegame pin short

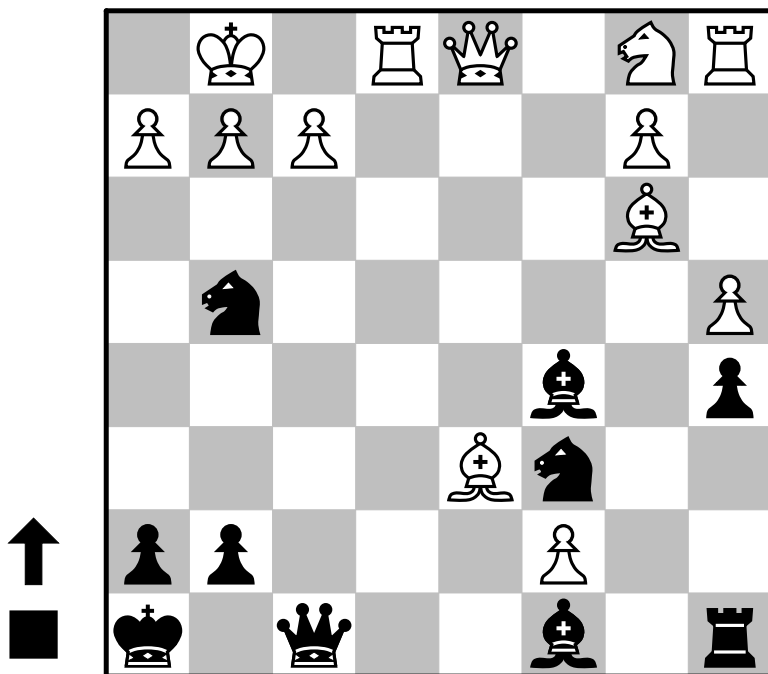
000008



000007

1. Bd6+ Qxd6 2. Rb7+ Kc6 3. Rb6+ Kxb6 4. Qxd6+
advantage attraction deflection master middlegame sacrifice veryLong

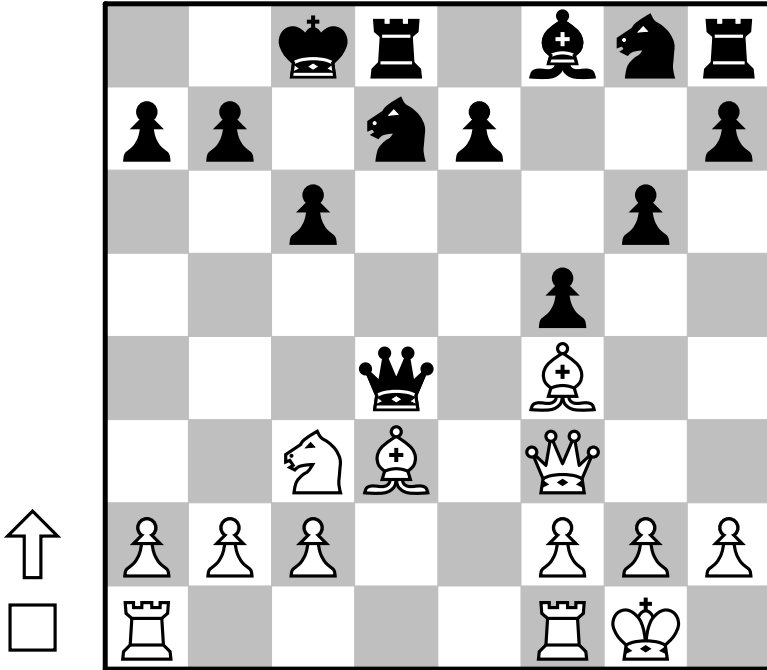
000009



000008

1. Bb5 Qxb5 2. Nc7+ Kf8 3. Nxb5
attraction crushing fork long opening pin sacrifice

000010

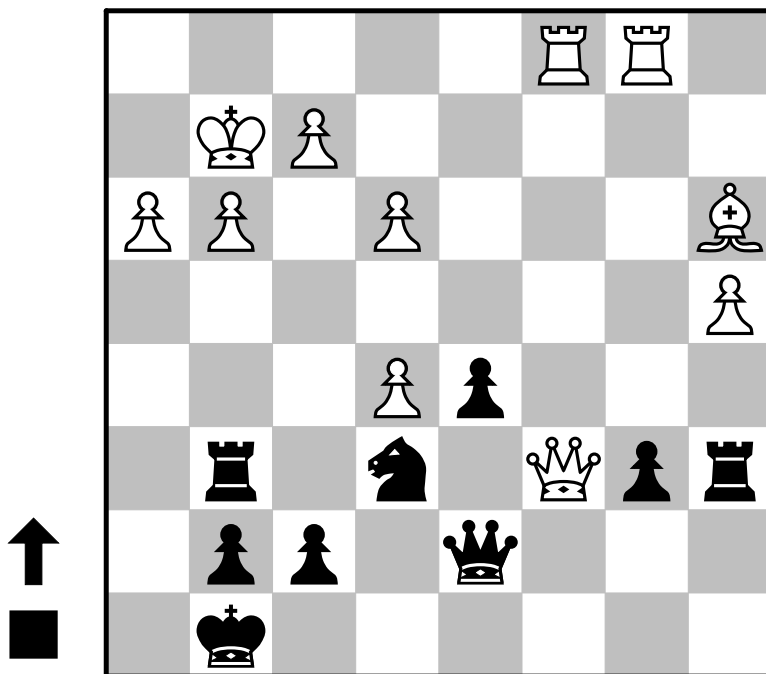


000009

1... Qxf2+ 2. Kh1 Qg1+ 3. Rxc1 Nf2#

kingsideAttack long mate mateIn3 opening sacrifice smotheredMate

000011

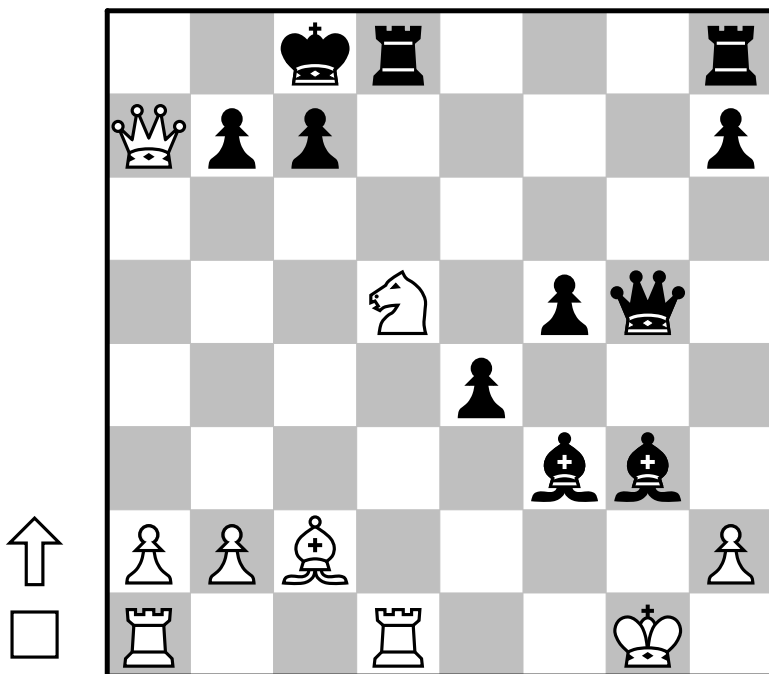


000010

1. Qxc6+ bxc6 2. Ba6#

bodenMate mate mateIn2 middlegame queensideAttack sacrifice short

000012

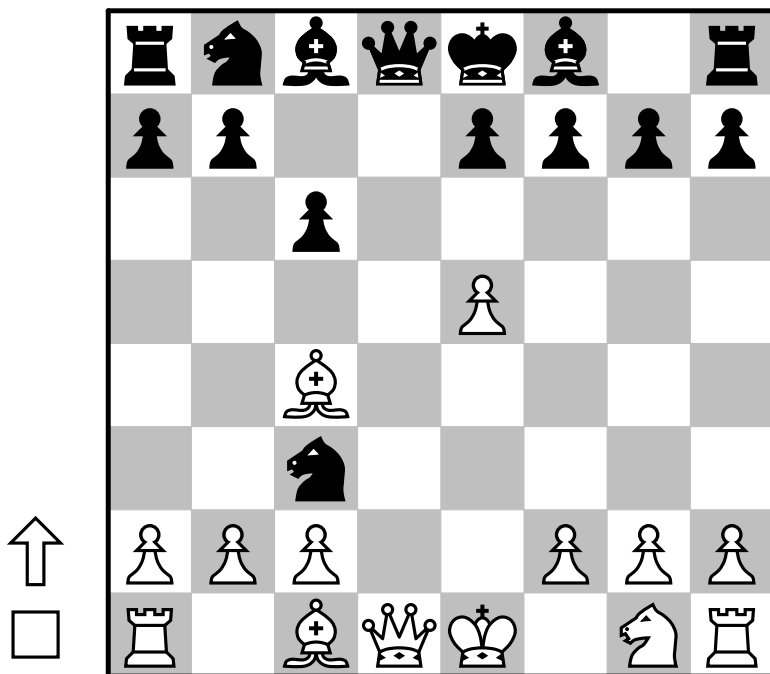


000011

1... Nf4+ 2. exf4 Rxc6

crushing discoveredAttack master middlegame pin short

000013

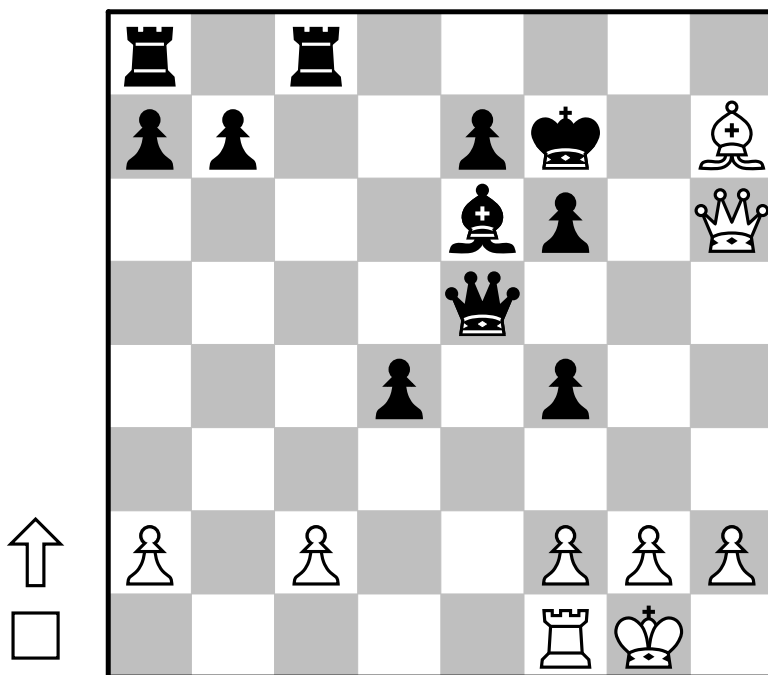


000012

1. Ne7+ Qxe7 2. Qa8#

mate mateIn2 middlegame queensideAttack sacrifice short

000014

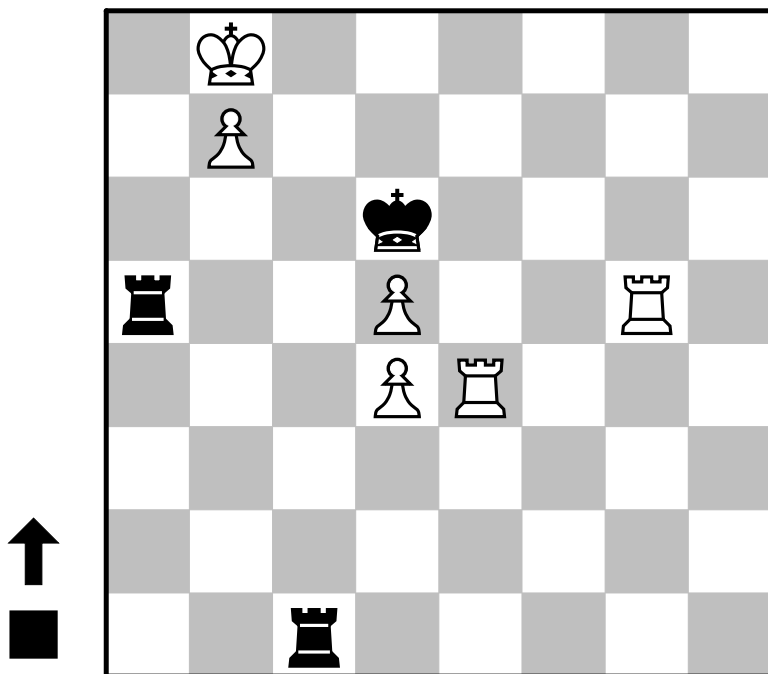


000013

1. Bxf7+ Kxf7 2. Qxd8

attackingF2F7 crushing deflection opening short

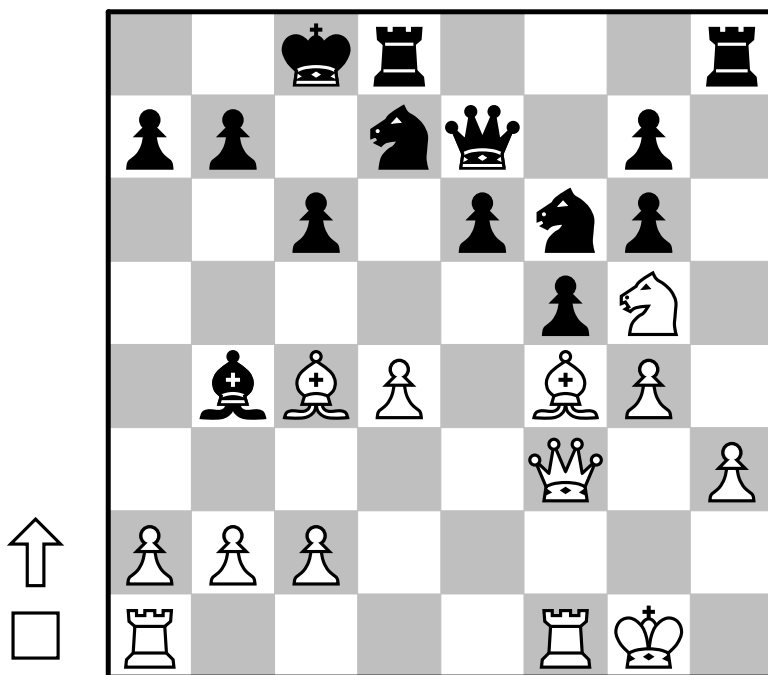
000015



000014

1. Bg6+ Kg8 2. Qh7+ Kf8 3. Qh8+ Bg8 4. Qh6#
mate mateIn4 middlegame veryLong

000016

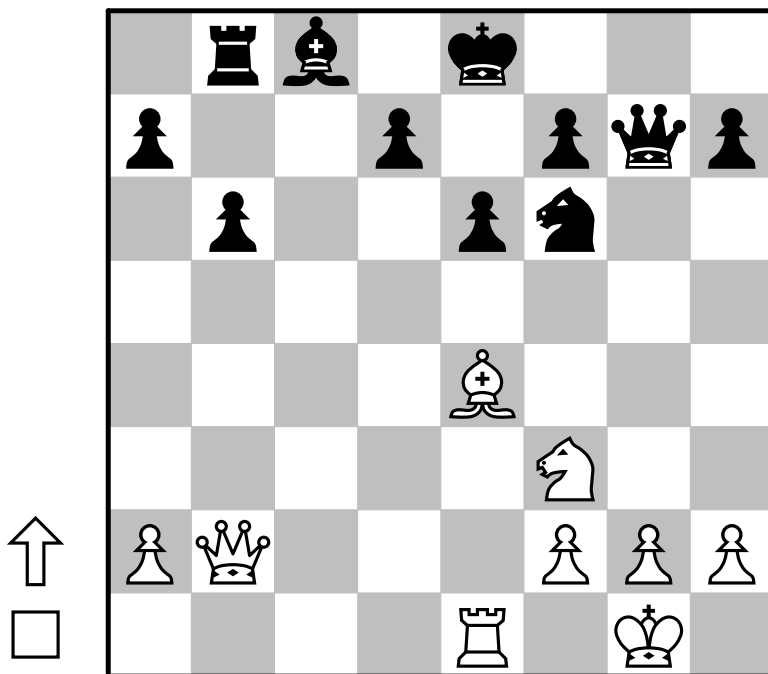


000015

1... Rf1+ 2. Kxf1 Rh1#

attraction endgame mate mateIn2 rookEndgame sacrifice short

000017

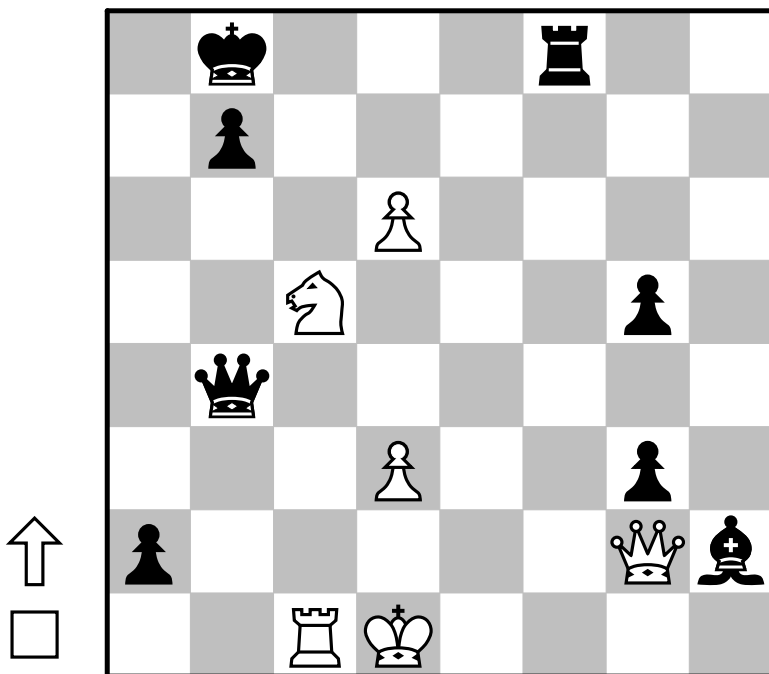


000016

1. Qxc6+ bxc6 2. Ba6#

bodenMate mate mateIn2 middlegame queensideAttack sacrifice short

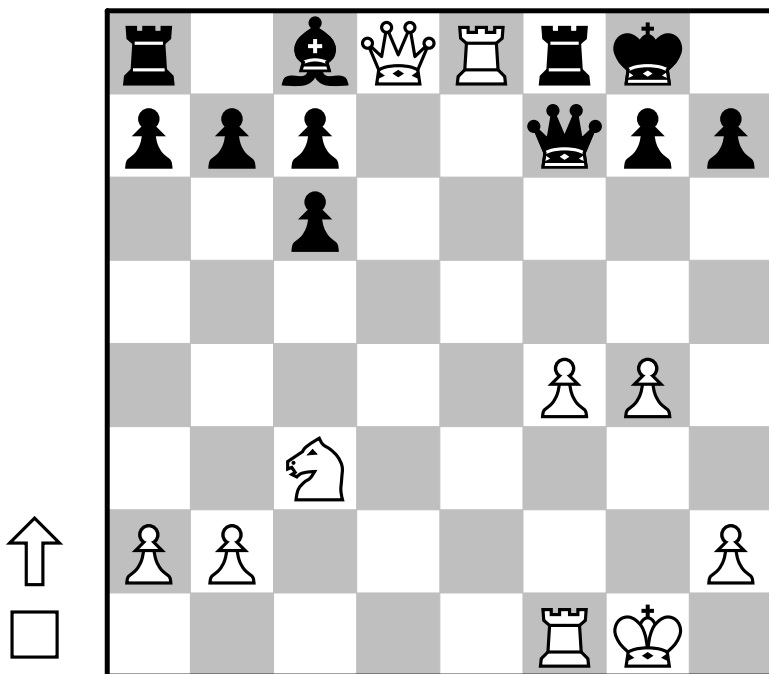
000018



000017

1. Qe5 d6 2. Qxd6
crushing middlegame short

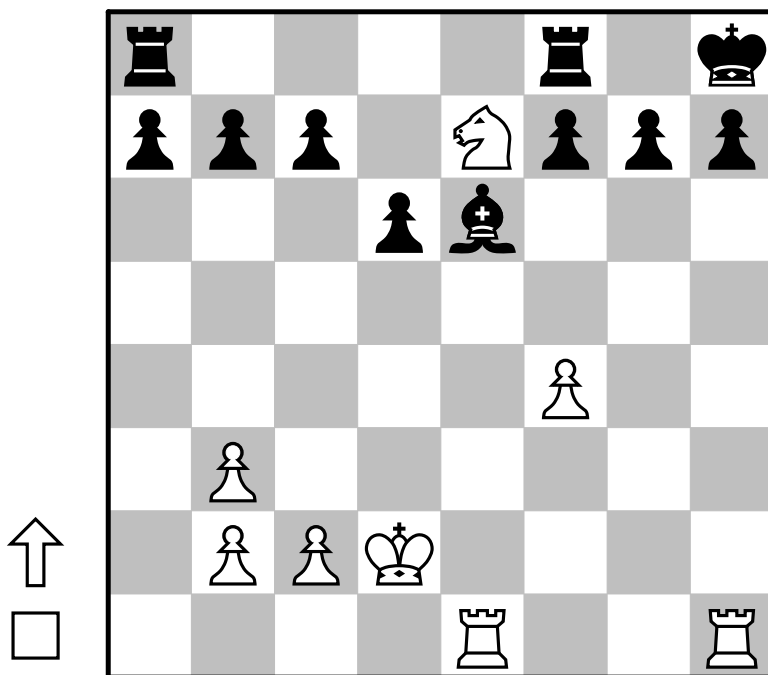
000019



000018

1. Nd7+ Ka7 2. Qxa2+ Qa5 3. Qxa5#
anastasiaMate endgame fork long mate mateIn3

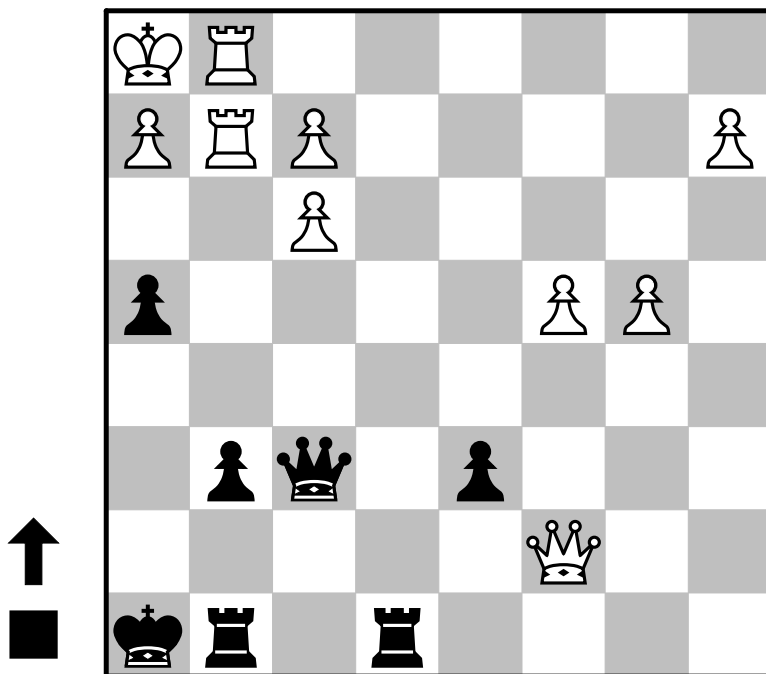
000020



000019

1. Rfe1 Be6 2. Rxf8+ Qxf8 3. Qxf8+ Rxf8 4. Rxe6
advantage middlegame quietMove veryLong

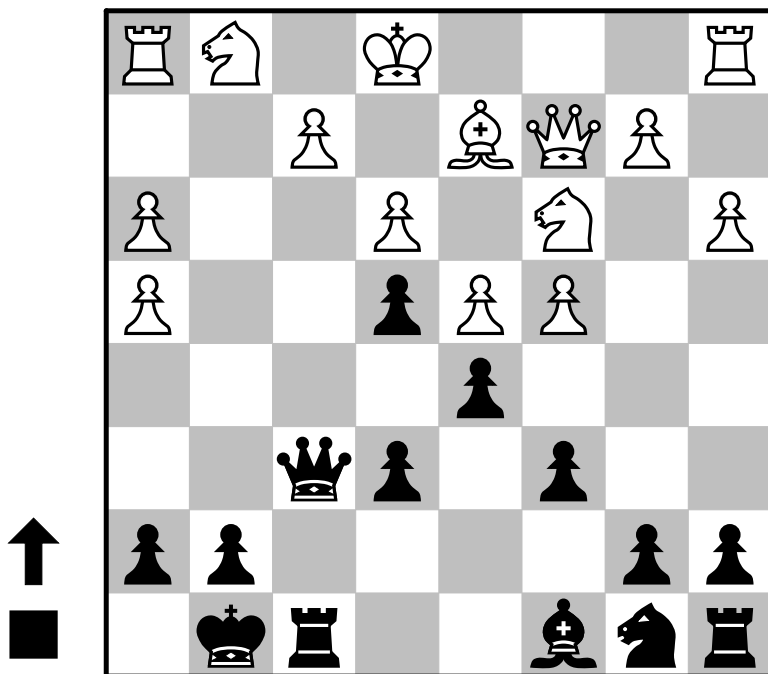
000021



000020

1. Rxh7+ Kxh7 2. Rh1+ Bh3 3. Rxh3#
anastasiaMate attraction endgame long mate mateIn3 sacrifice

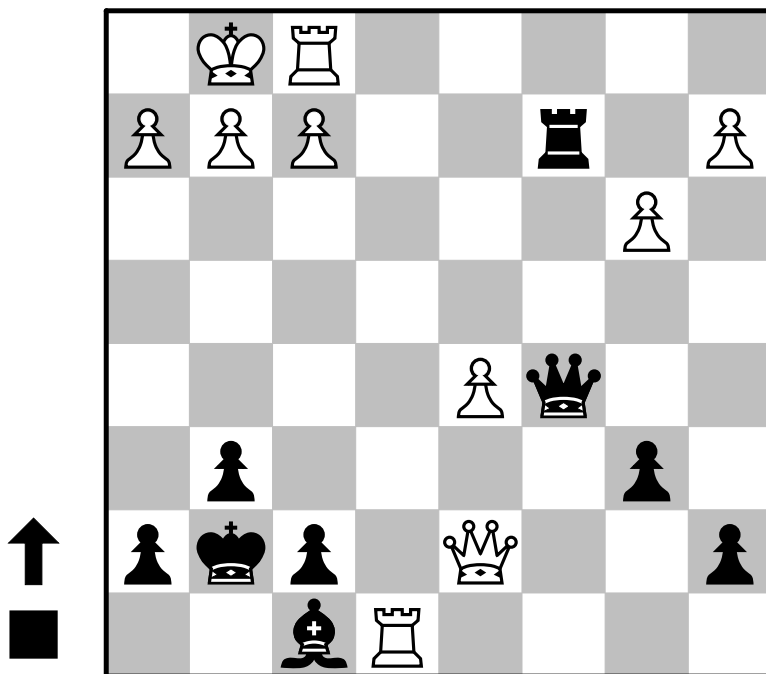
000022



000021

1... Qxf3 2. Qxd6 h3 3. Qg3 hxg2+
advancedPawn advantage endgame long

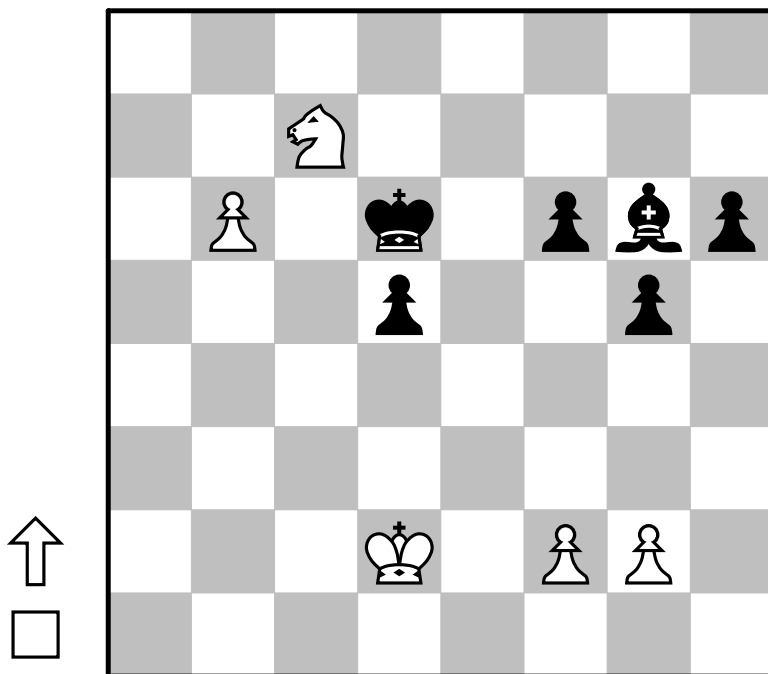
000023



000022

1... Qxf2+ 2. Kd1 Qg2 3. Be1 Qxh1
attackingF2F7 crushing long opening trappedPiece

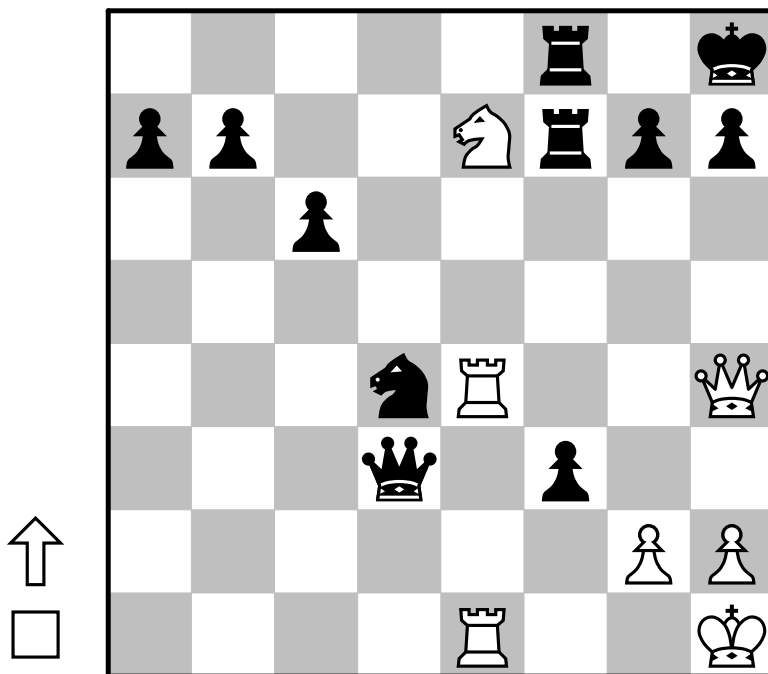
000024



000023

1... Qxf2+ 2. Rxf2 Rc1+ 3. Rf1 Bc5+ 4. Re3 Bxe3+ 5. Kh1 Rxf1#
backRankMate endgame mate mateIn5 sacrifice veryLong

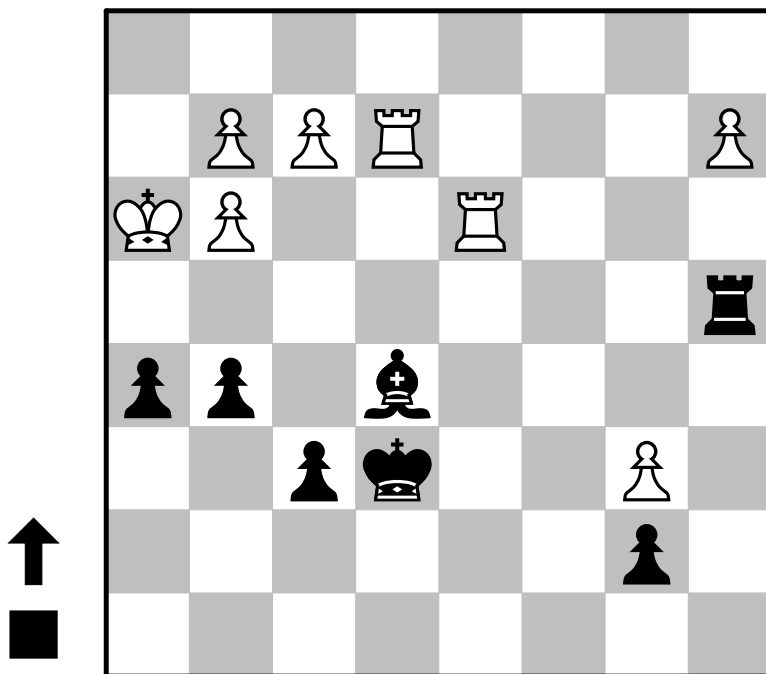
000025



000024

1. Nxd5 Kc6 2. Ne7+ Kxb6 3. Nxb6
crushing endgame fork long

000026

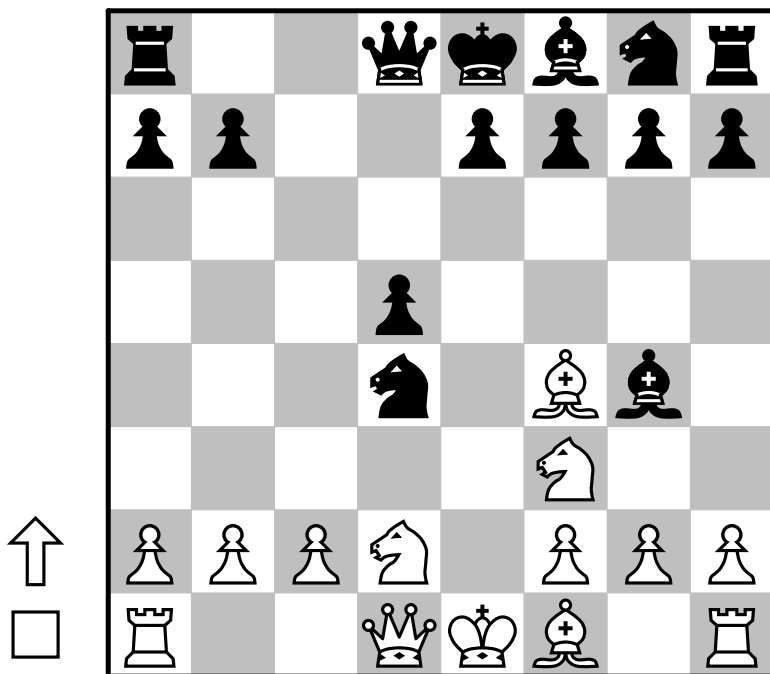


000025

1. Qxh7+ Kxh7 2. Rh4#

anastasiaMate attraction master masterVsMaster mate mateIn2
middlegame sacrifice short superGM

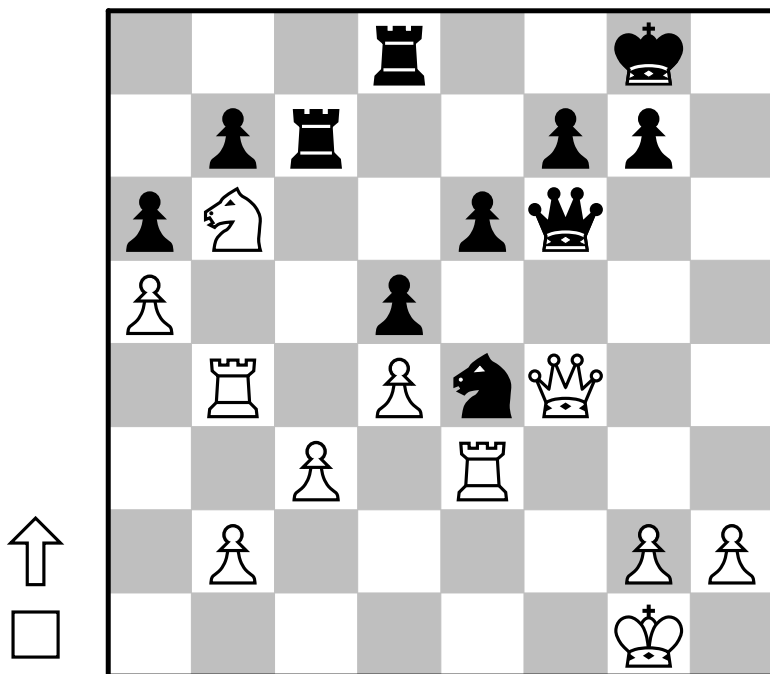
000027



000026

1... Rh4+ 2. gxh4 g4#
endgame mate mateIn2 sacrifice short

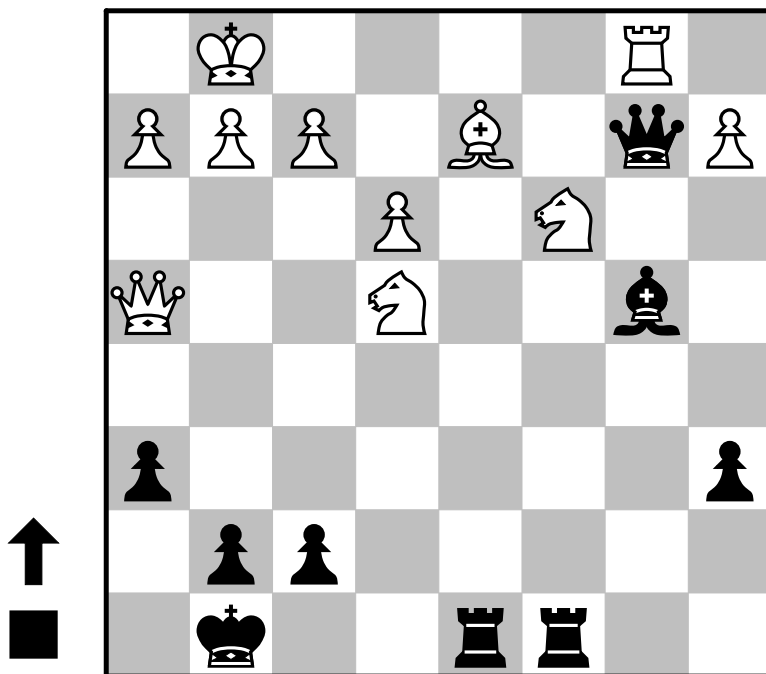
000028



000027

1. Nxd4 Bxd1 2. Bb5+
advantage opening sacrifice short

000029

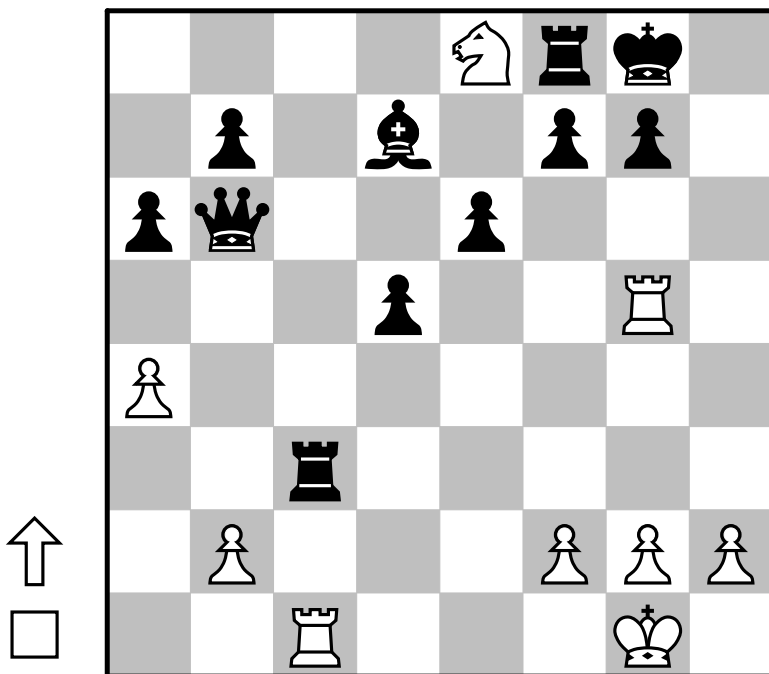


000028

1. Rxe4 dxe4 2. Qxc7 e3 3. Qg3

crushing defensiveMove long master middlegame superGM

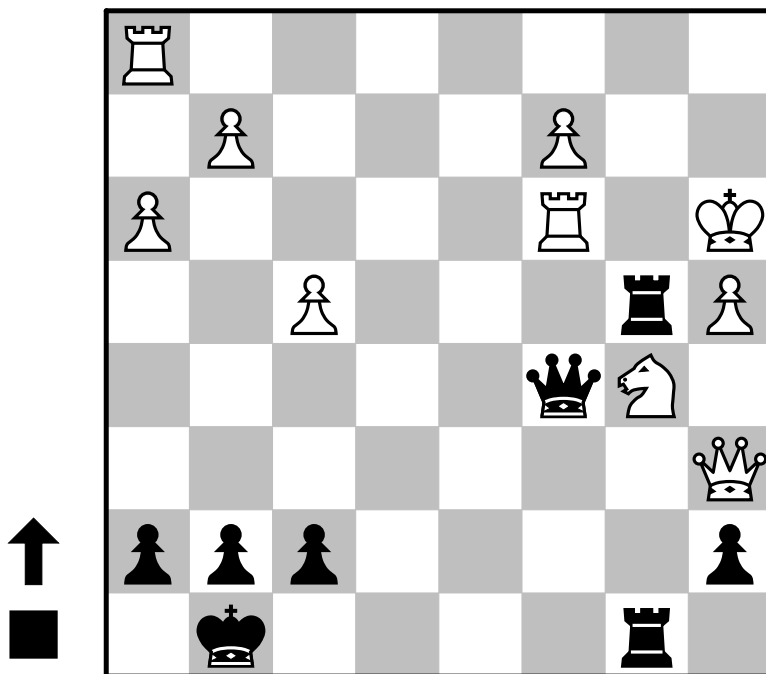
000030



000029

1... Qxb1+ 2. Nxb1 Rc1+ 3. Bxc1 Rd1#
backRankMate long mate mateIn3 middlegame sacrifice

000031

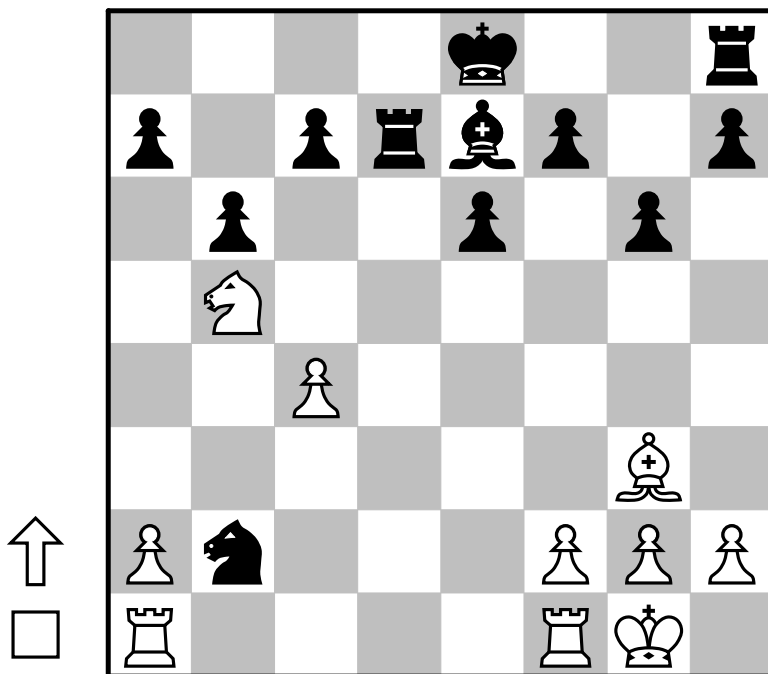


000030

1. Nf6+ Kh8 2. Rh5#

kingsideAttack mate mateIn2 middlegame pin short

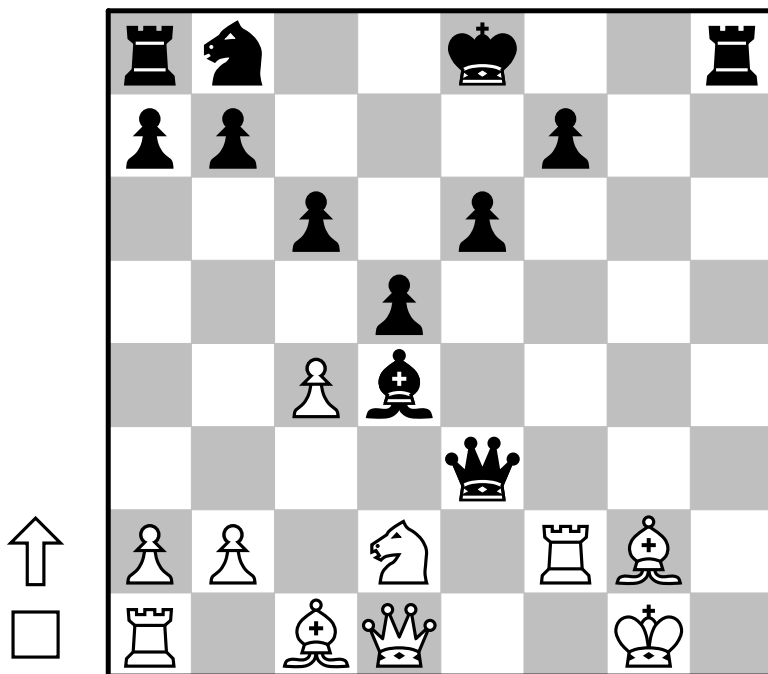
000032



000031

1... Rc4+ 2. Ka2 Rxc3 3. Nxc3 Qxc3
crushing discoveredAttack long middlegame

000033

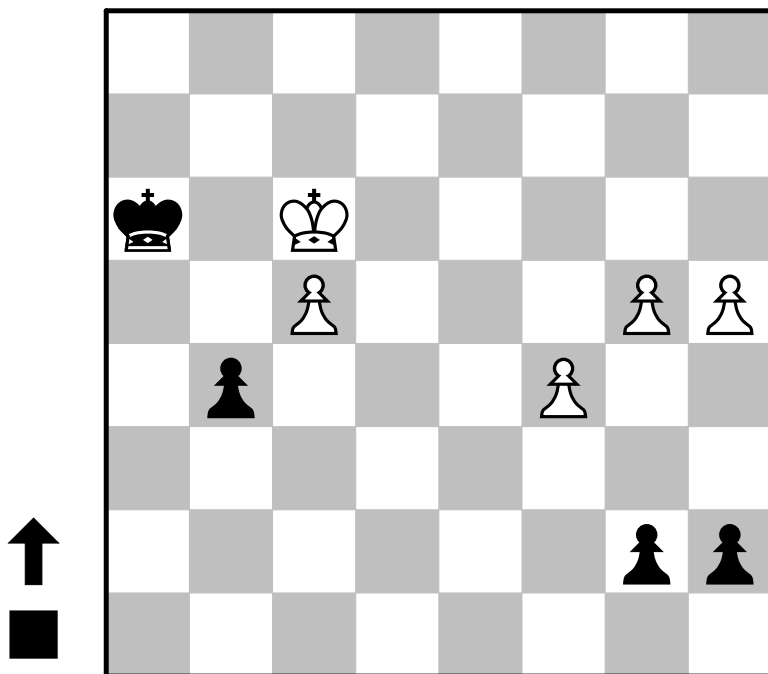


000032

1. Be5 O-O 2. Bxb2

advantage fork middlegame short

000034

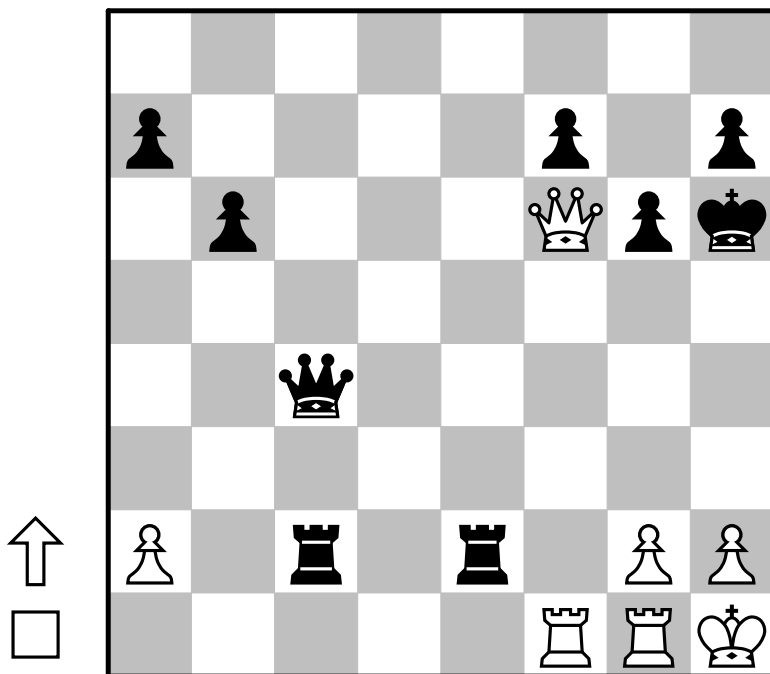


000033

1. Ne4 dxe4 2. Bxe3

crushing discoveredAttack opening quietMove short trappedPiece

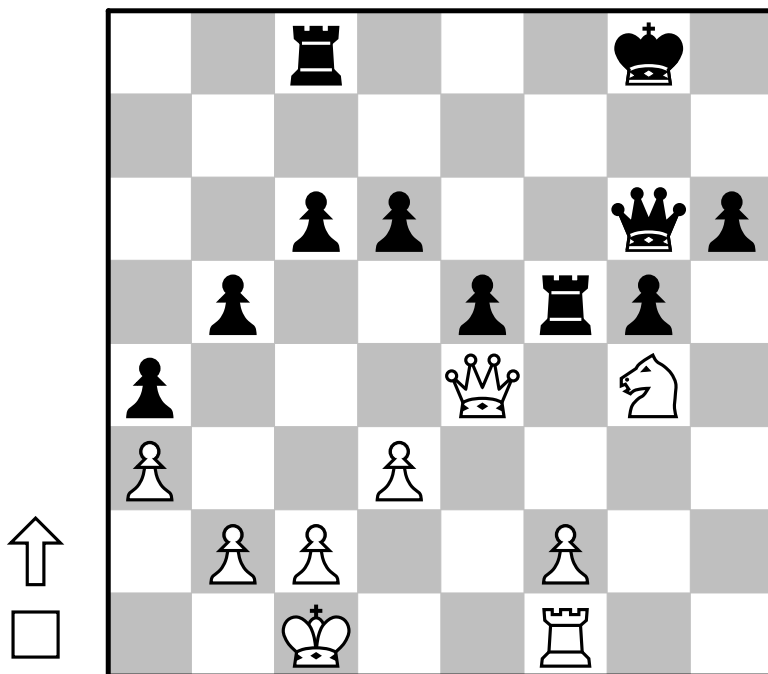
000035



000034

1... g4+ 2. Kf2 Kh2 3. f5 g3+
crushing endgame long pawnEndgame

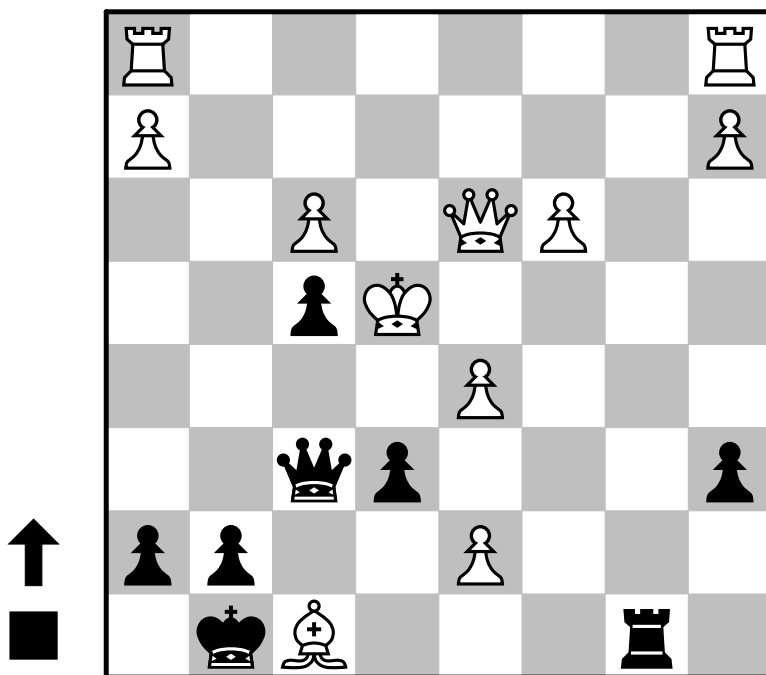
000036



000035

1. Rf4 Re4 2. Qh4+ Kg7 3. Rxe4
crushing endgame long

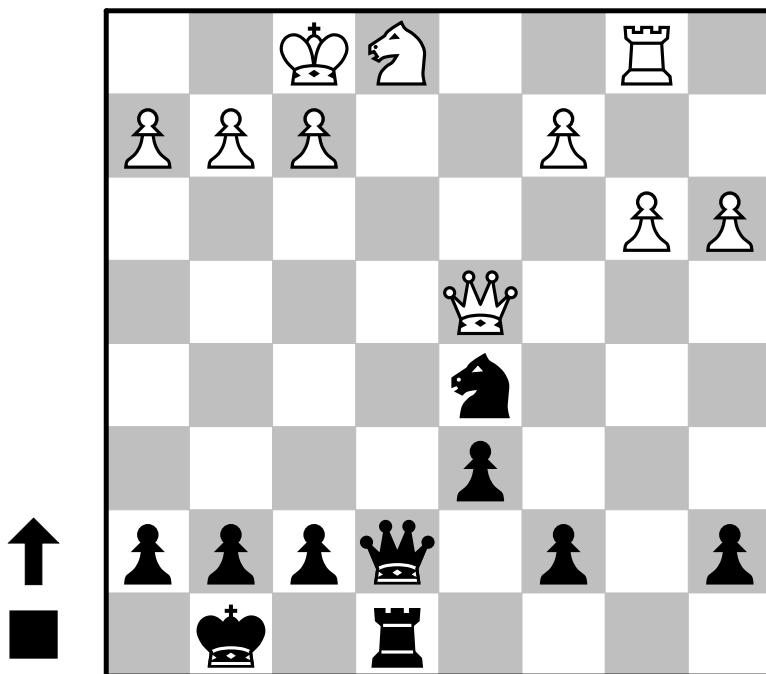
000037



000036

1. Qxf5 Qxf5 2. Nxh6+ Kh7 3. Nxf5
attraction crushing endgame exposedKing fork long sacrifice

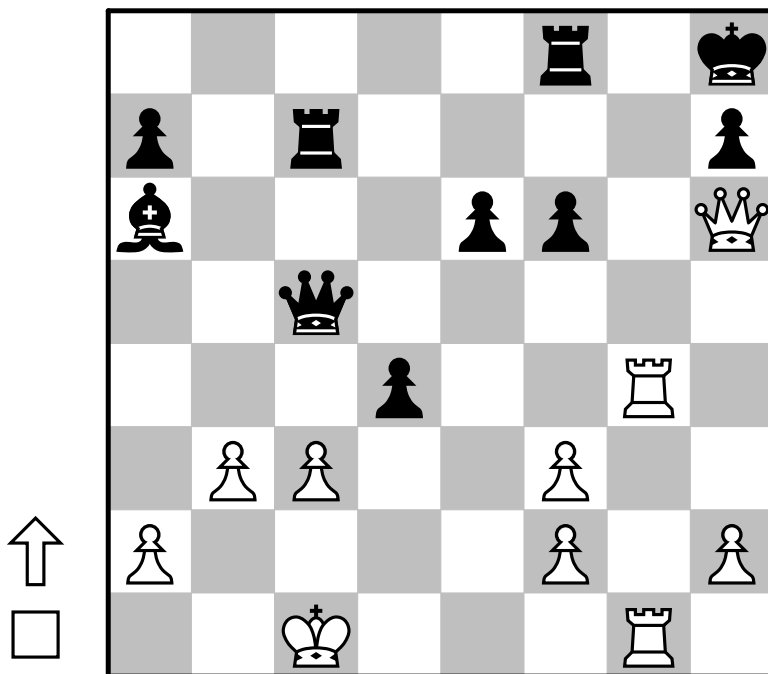
000038



000037

1... Qf5+ 2. Kd4 Qxd5#
endgame fork mate mateIn2 short

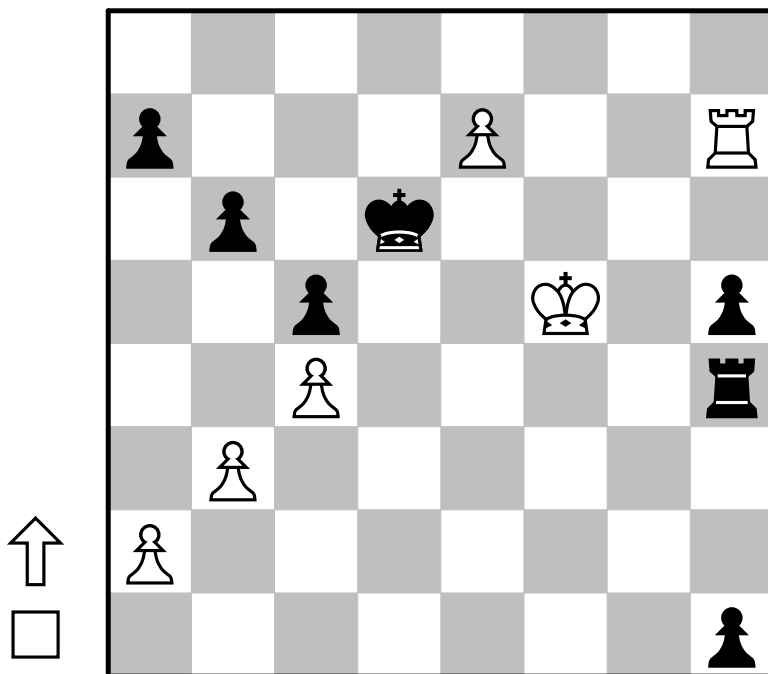
000039



000038

1... Qe2+ 2. Kg1 Qxe1+ 3. Rxe1 Rxe1#
backRankMate deflection endgame long mate mateIn3

000040

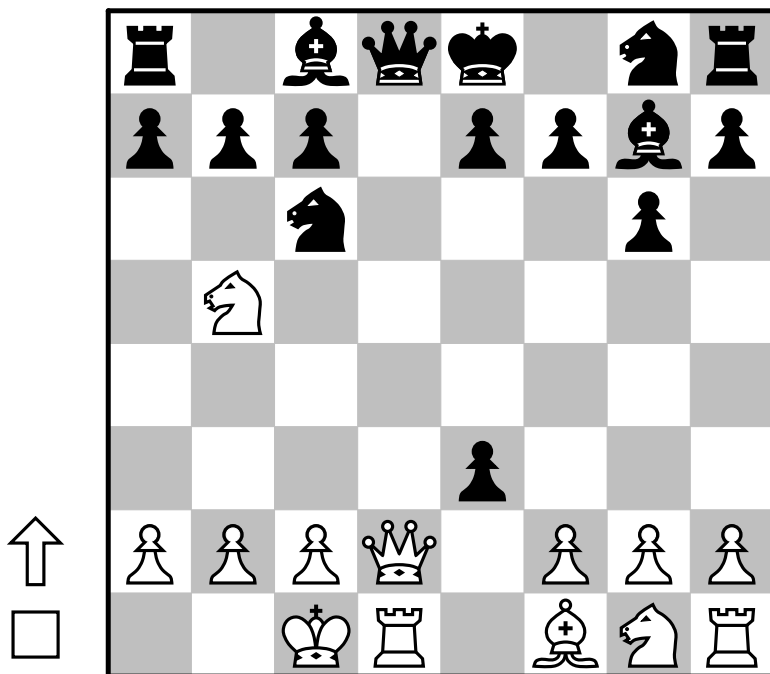


000039

1. Qxf6+ Rxf6 2. Rg8#

kingsideAttack mate mateIn2 middlegame sacrifice short

000041

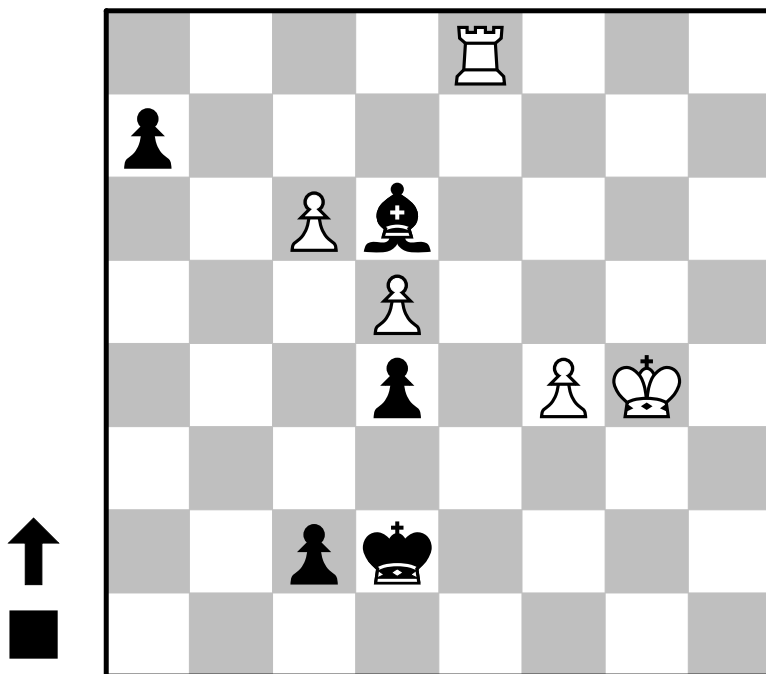


000040

1. e8 Kc6 2. Rc7+

advancedPawn endgame master mate mateIn2 promotion short
underPromotion

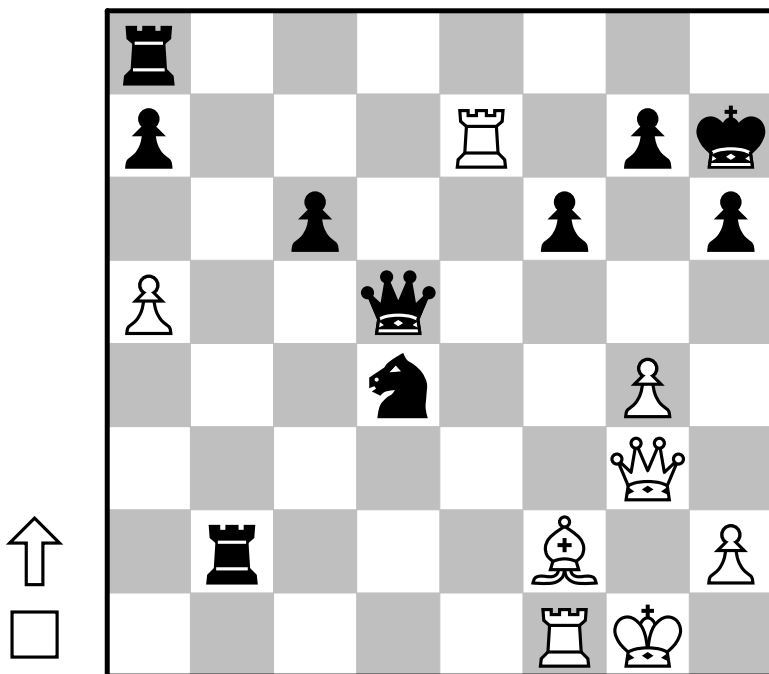
000042



000041

1. Qxd8+ Nxd8 2. Nxc7+ Kf8 3. Rxd8#
backRankMate deflection fork long mate mateIn3 opening

000043

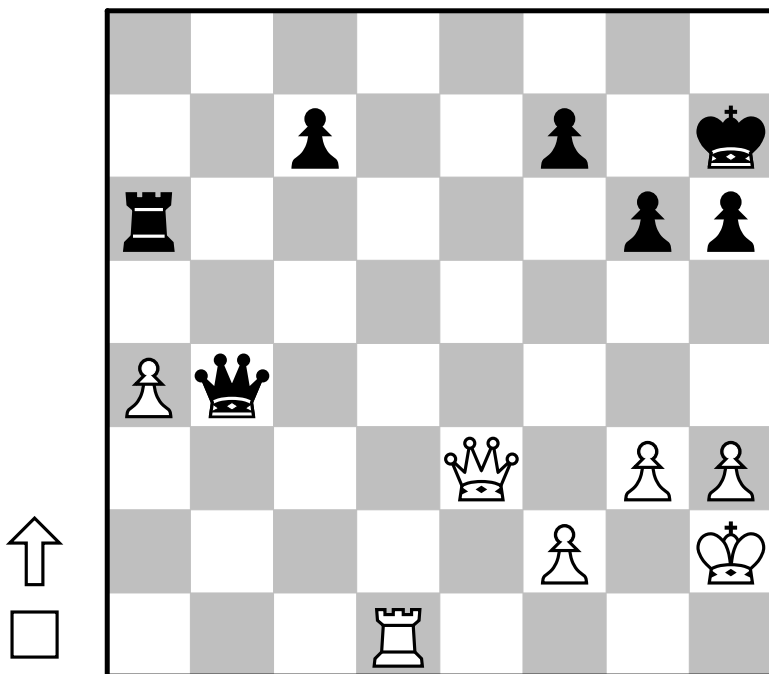


000042

1... Bg1 2. c6 h1

advancedPawn crushing endgame promotion short

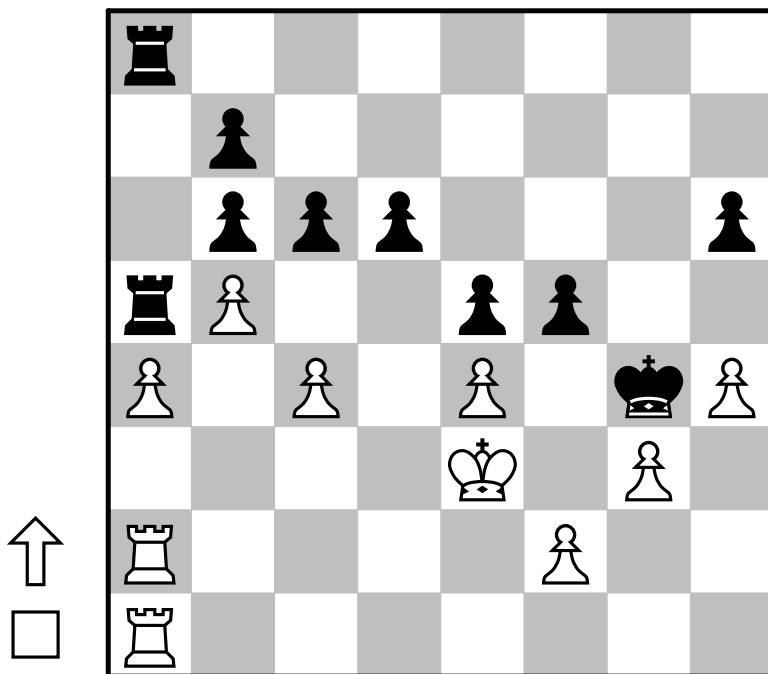
000044



000043

1. Qd3+ Kh8 2. Qxd4
advantage middlegame short

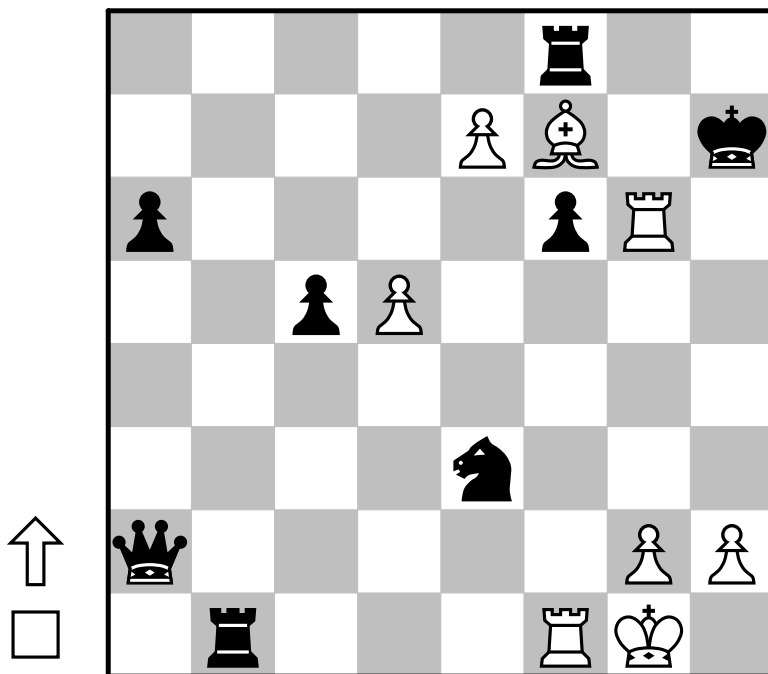
000045



000044

1. Qe8 Qb2 2. Qxf7+
crushing endgame short

000046

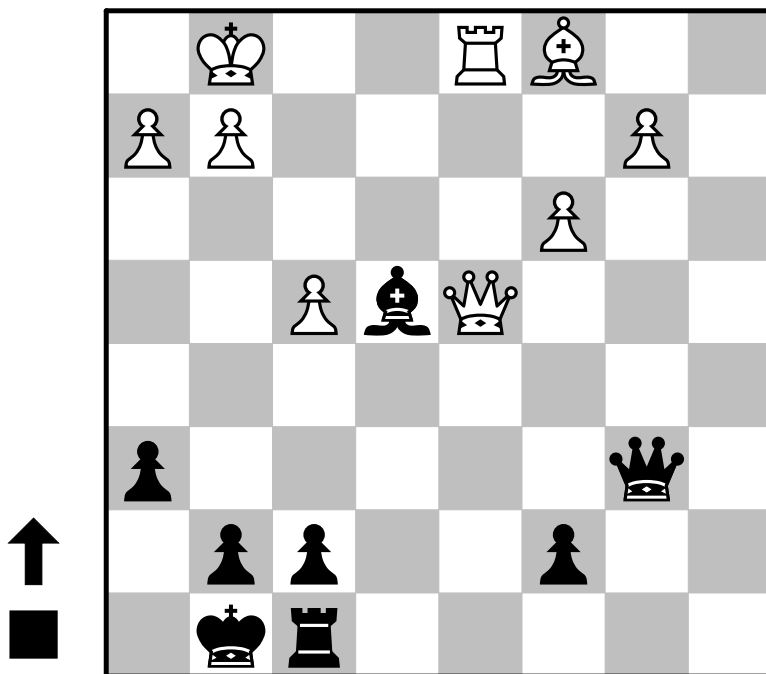


000045

1. f3+ Kh5 2. exf5

crushing deflection endgame rookEndgame short

000047

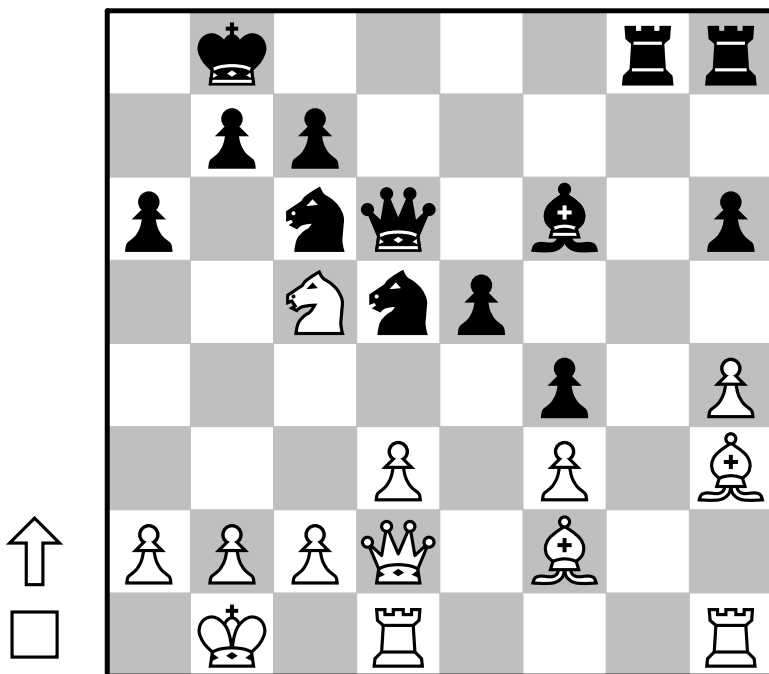


000046

1. exf8 Kh8 2. Rg8+

advancedPawn hangingPiece mate mateIn2 middlegame promotion
short underPromotion

000048

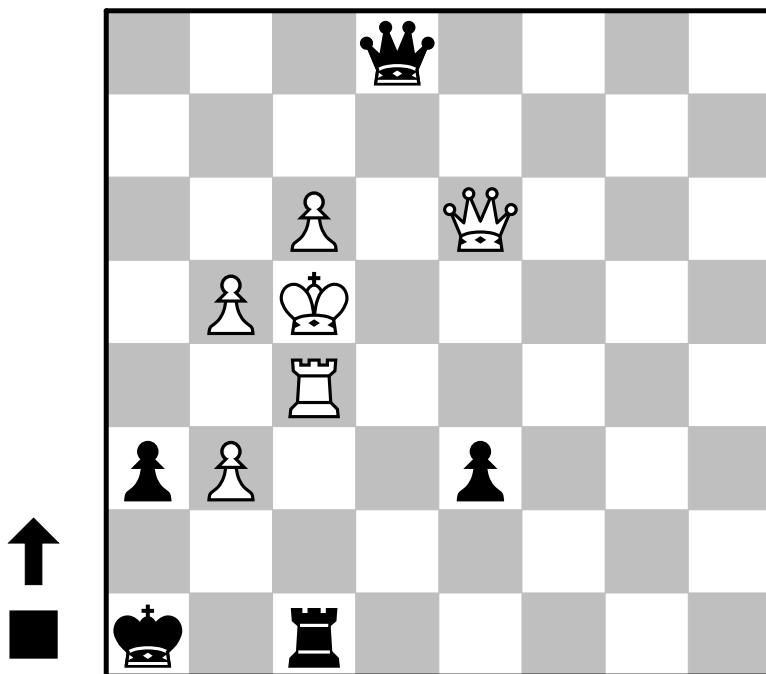


000047

1... Rd8 2. Qxb6 Rxd1+ 3. Kf2 cxb6

crushing endgame fork intermezzo long pin sacrifice skewer

000049



000048

1. Nd7+ Ka8 2. Bc5 Qxc5 3. Nxc5

clearance crushing long middlegame queensideAttack trappedPiece

000049

1... Qe5#

endgame mate mateIn1 oneMove pin